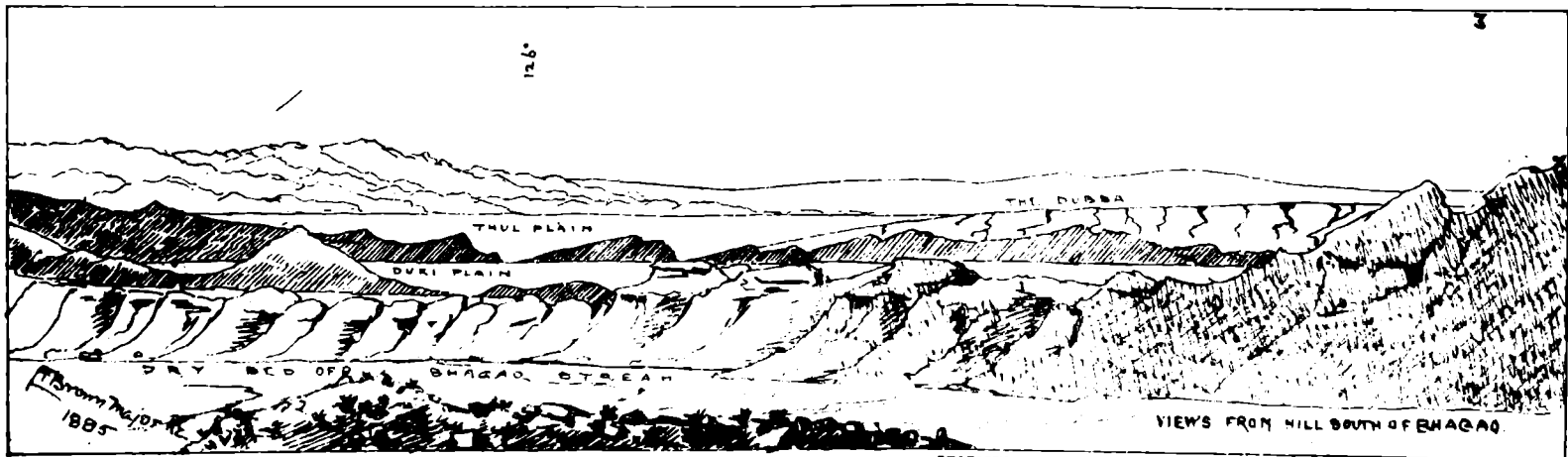


BORELI HILL

Major R.C. Brown  
85

KATUREE  
ON THE TRAIL ROAD

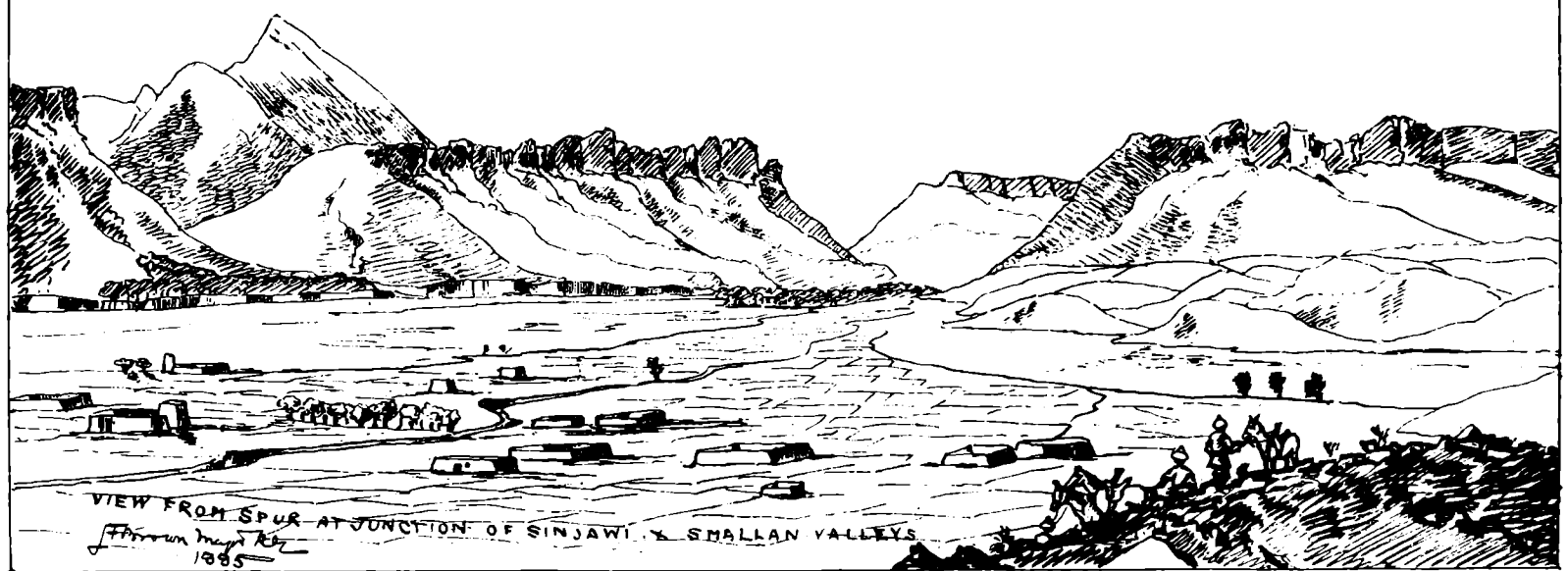
PHOTOZINCORGRAPHED AT THE SURVEY OF INDIA OFFICE CALCUTTA, JULY 1895



PHOTOLITHOGRAPHED AT THE SURVEY OF INDIA OFFICE, CALCUTTA, JULY 1885.

240°

256°



VIEW FROM SPUR AT JUNCTION OF SINJAWI & SHALLAN VALLEYS  
 Johnson Major R.E.  
 1885

52°



ANANBAR RIVER

CAMP OF ARABICS

RAPIDS & FORESTS OF THORNY TREES

VIEW DOWN BORI VALLEY  
FROM KHARU HILL  
J. P. ...  
17/1/1885

PHOTOENGRAVED AT THE SURVEY OF INDIA OFFICES, CALCUTTA, JULY 1885

330°

SIGNAL HILL

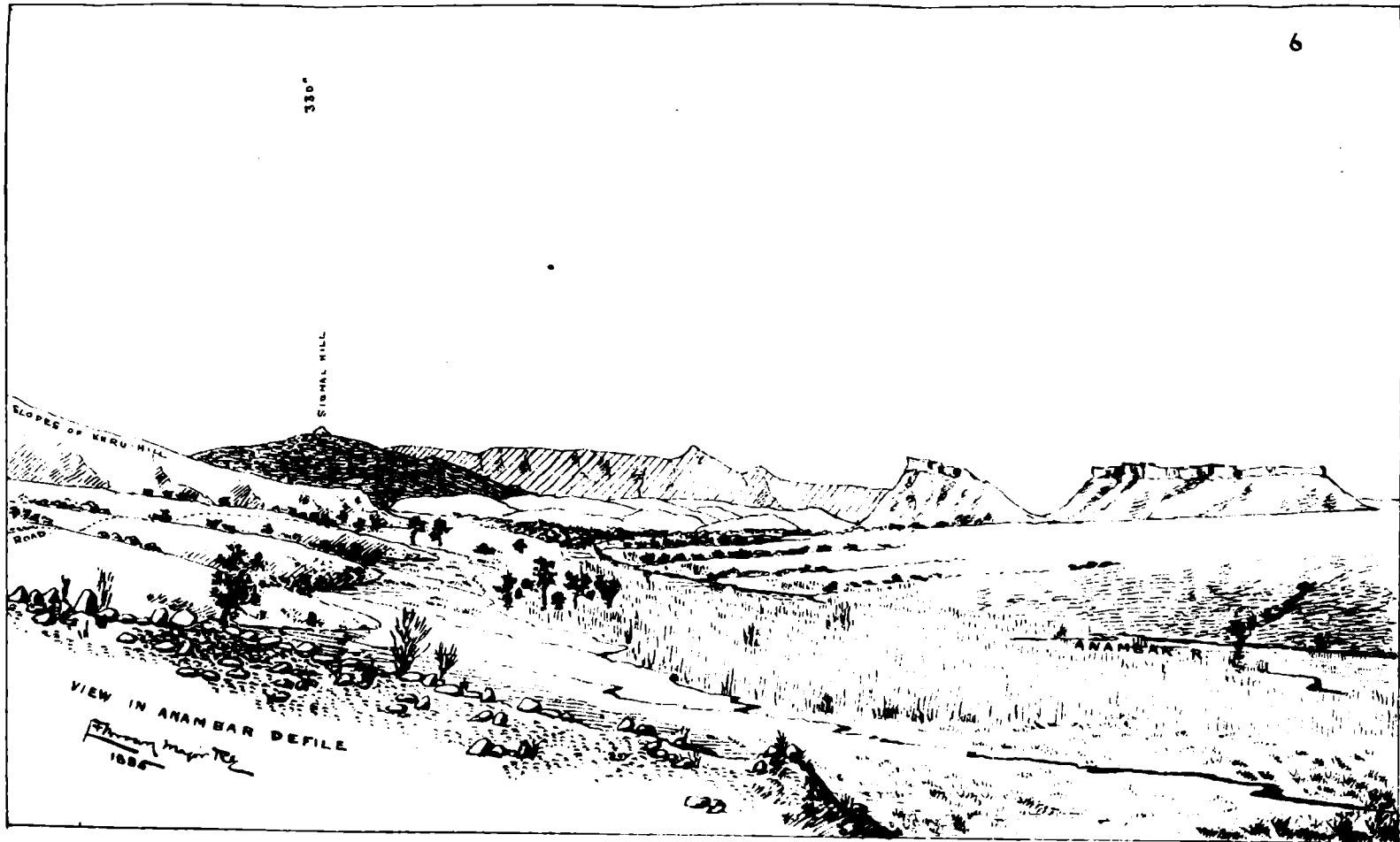
SLOPES OF URU HILL

ROAD

ANAMBAR R.

VIEW IN ANAMBAR DEFILE

*Thomson*  
1886



PHOTOENWOODGRAVED AT THE SURVEY OF INDIA OFFICES, CALCUTTA, JULY 1886

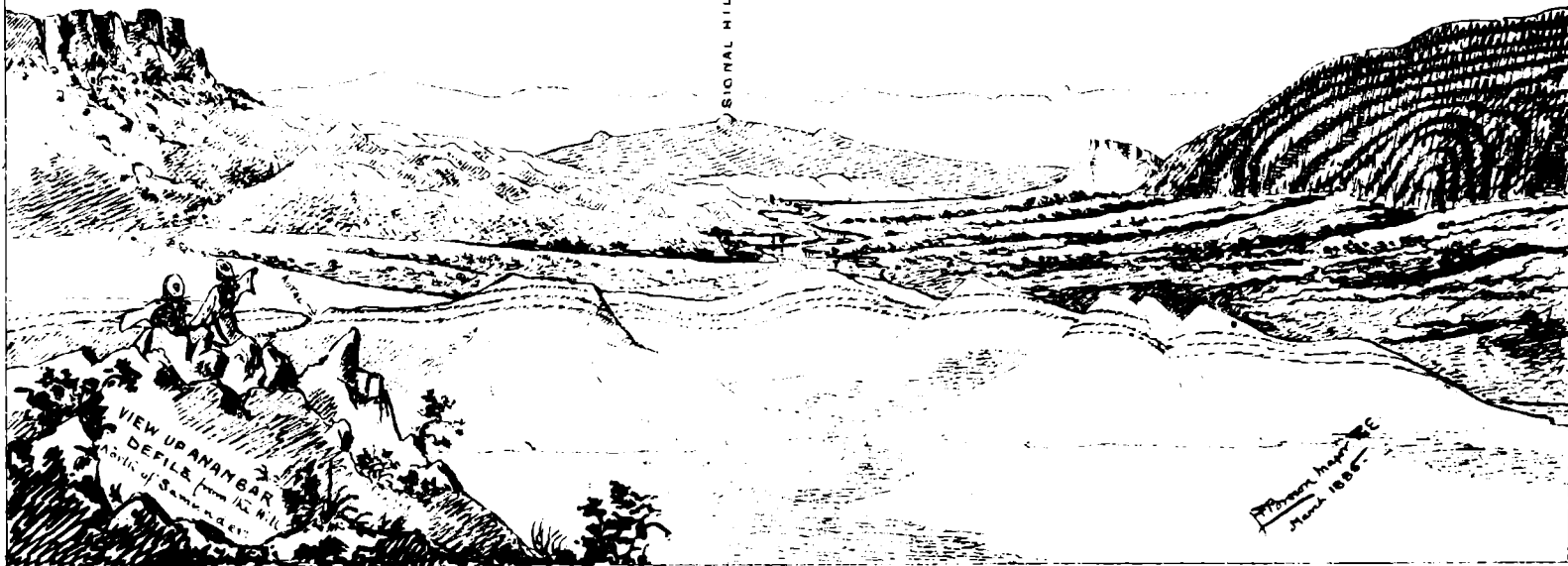
275°

335°

351°

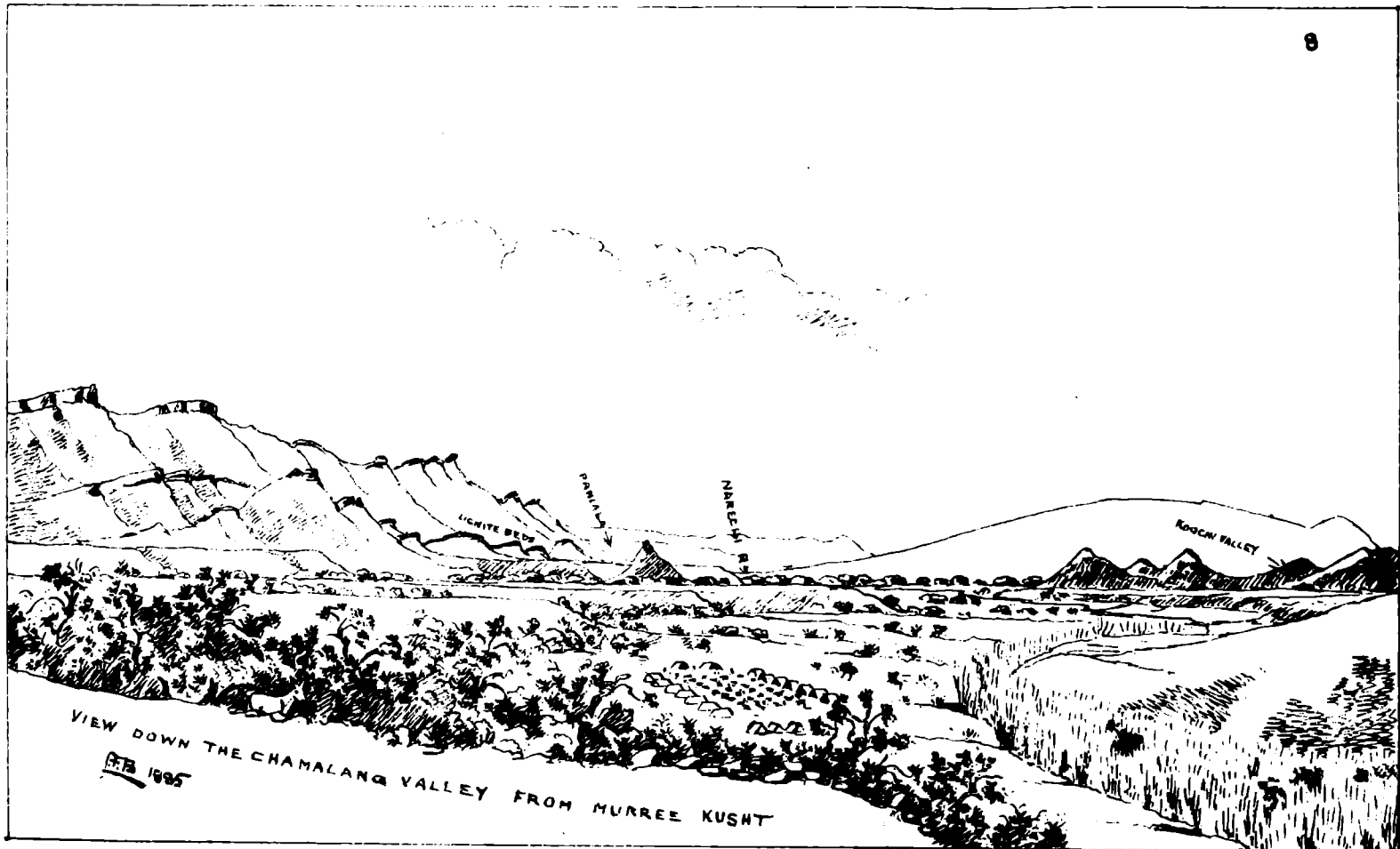
KHRU HILL

SIGNAL HILL



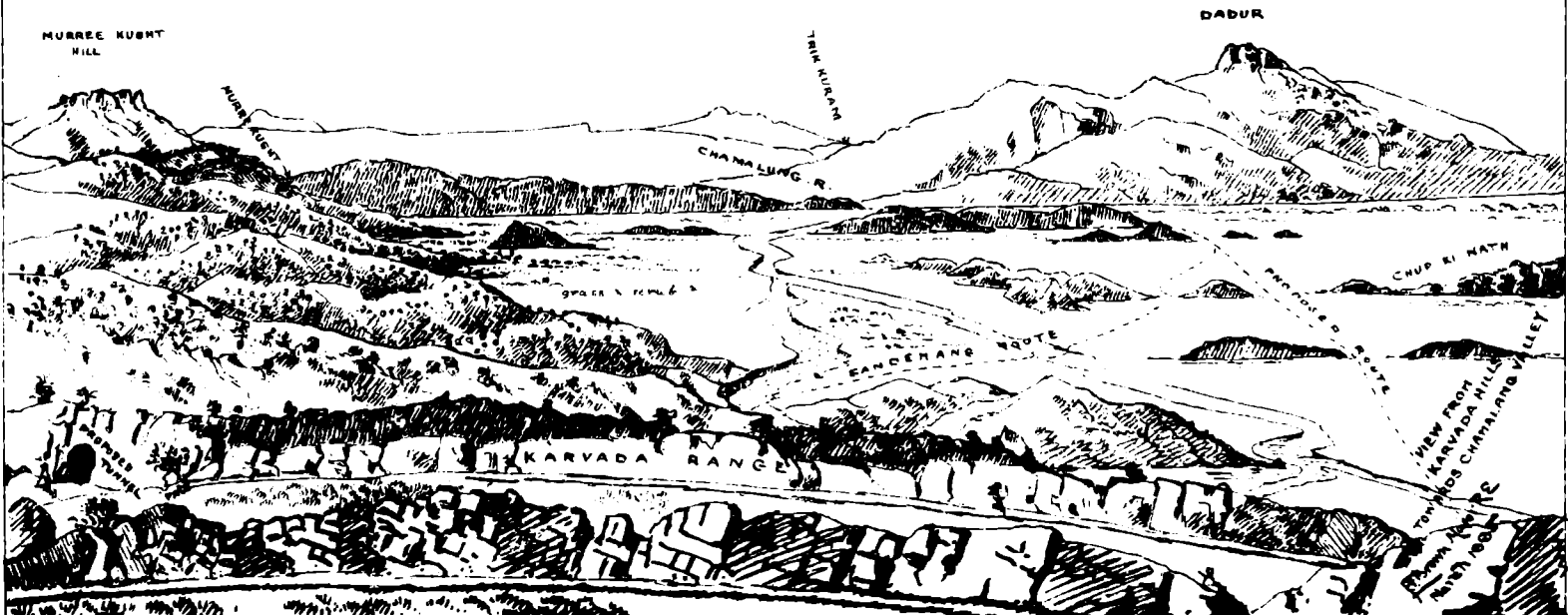
Photograph by  
March 1887

PHOTOGRAPHED AT THE SURVEY OF INDIA OFFICE, CALCUTTA, JULY 1885



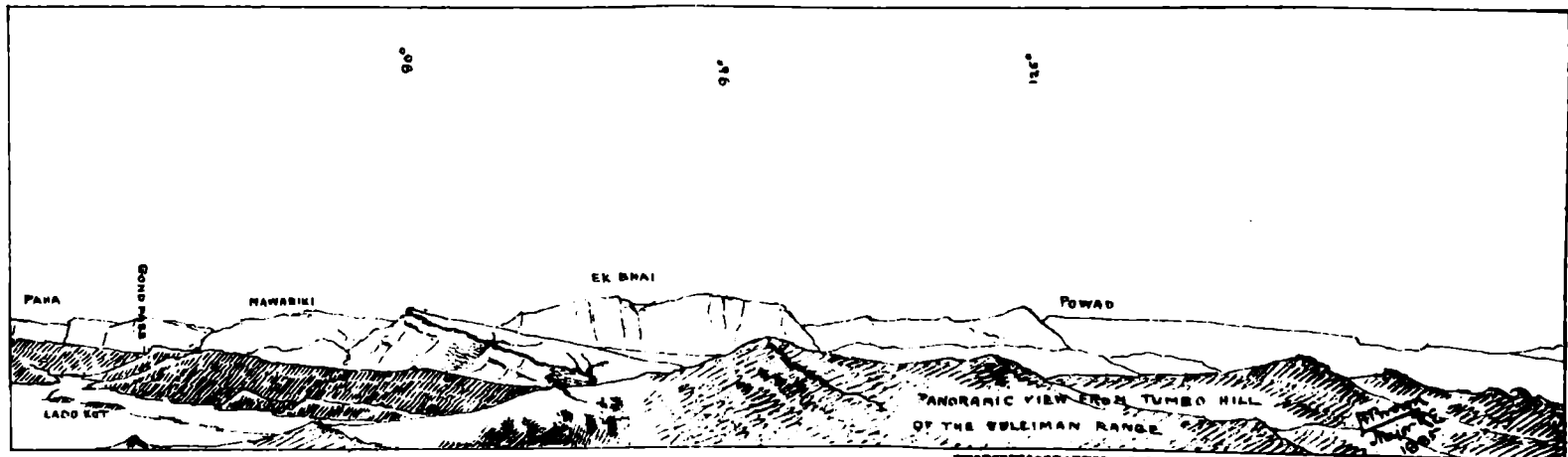
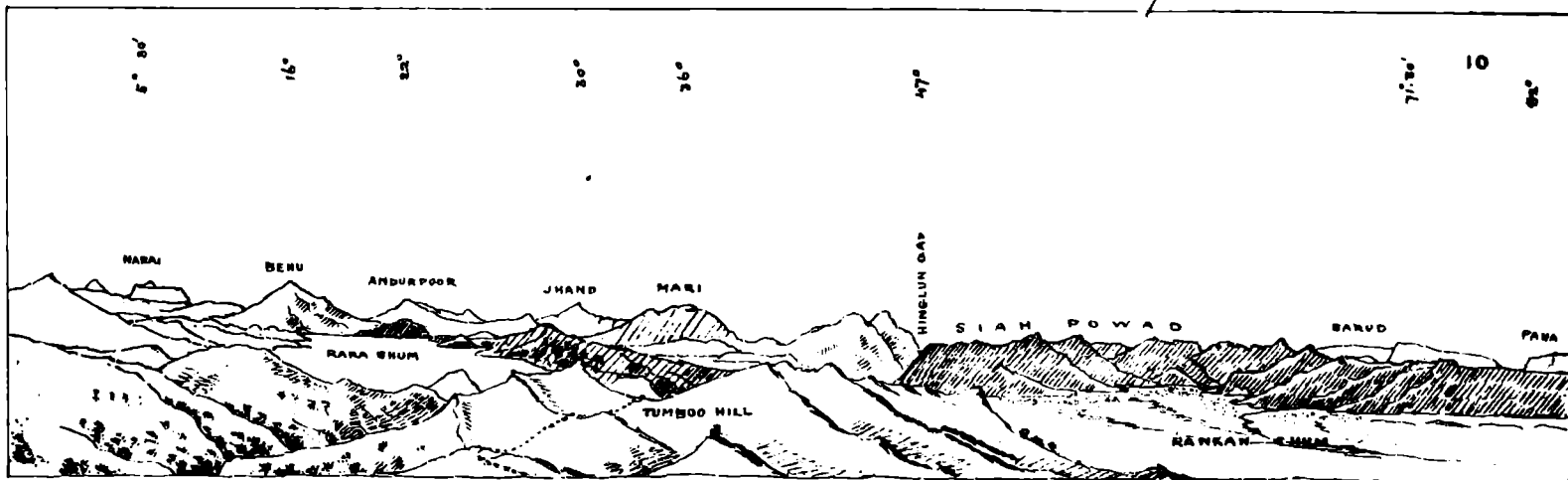
VIEW DOWN THE CHAMALANG VALLEY FROM MURREE KUSHT

1895



PHOTOSTEREOGRAPHED AT THE SURVEY OF INDIA OFFICES, CALCUTTA, JULY 1856





PHOTOZINCGRAPHED AT THE SURVEY OF INDIA OFFICES, CALCUTTA, JULY 1888

13.0°

HAWARISI

EK BHAI

BILUCH BIL  
LILA RABER

GREAT BHAL

DRIGAI SHUM

VIEW FROM SUMMIT OF GOND PASS  
TOWARDS THE SULBIMAN RANGE

Photograph by  
Major R.E.  
1886

1852

HAWARIKI

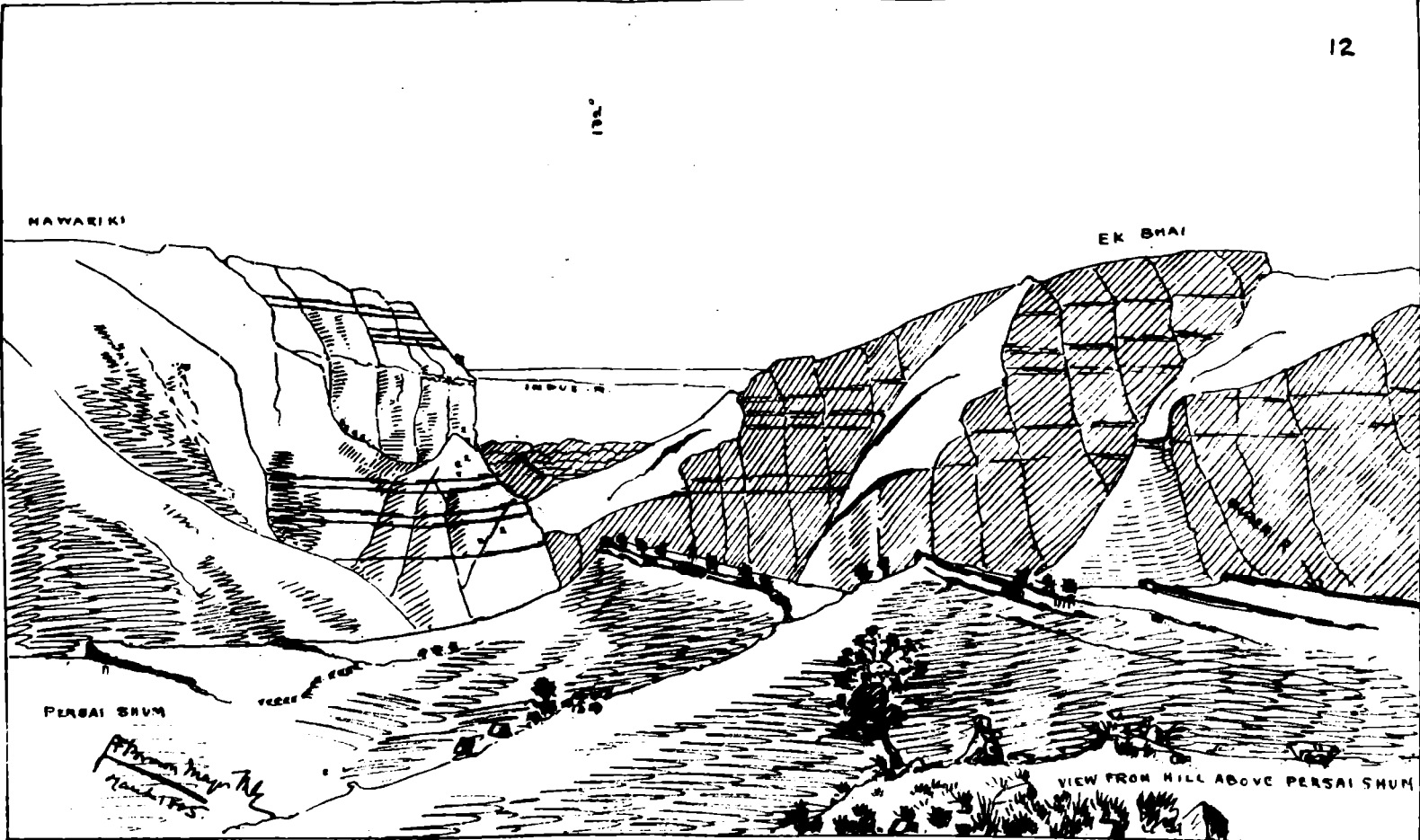
EK BHAI

INDUS R.

PERSAI SHUM

*Photom. by T. G. ...*

VIEW FROM HILL ABOVE PERSAI SHUM



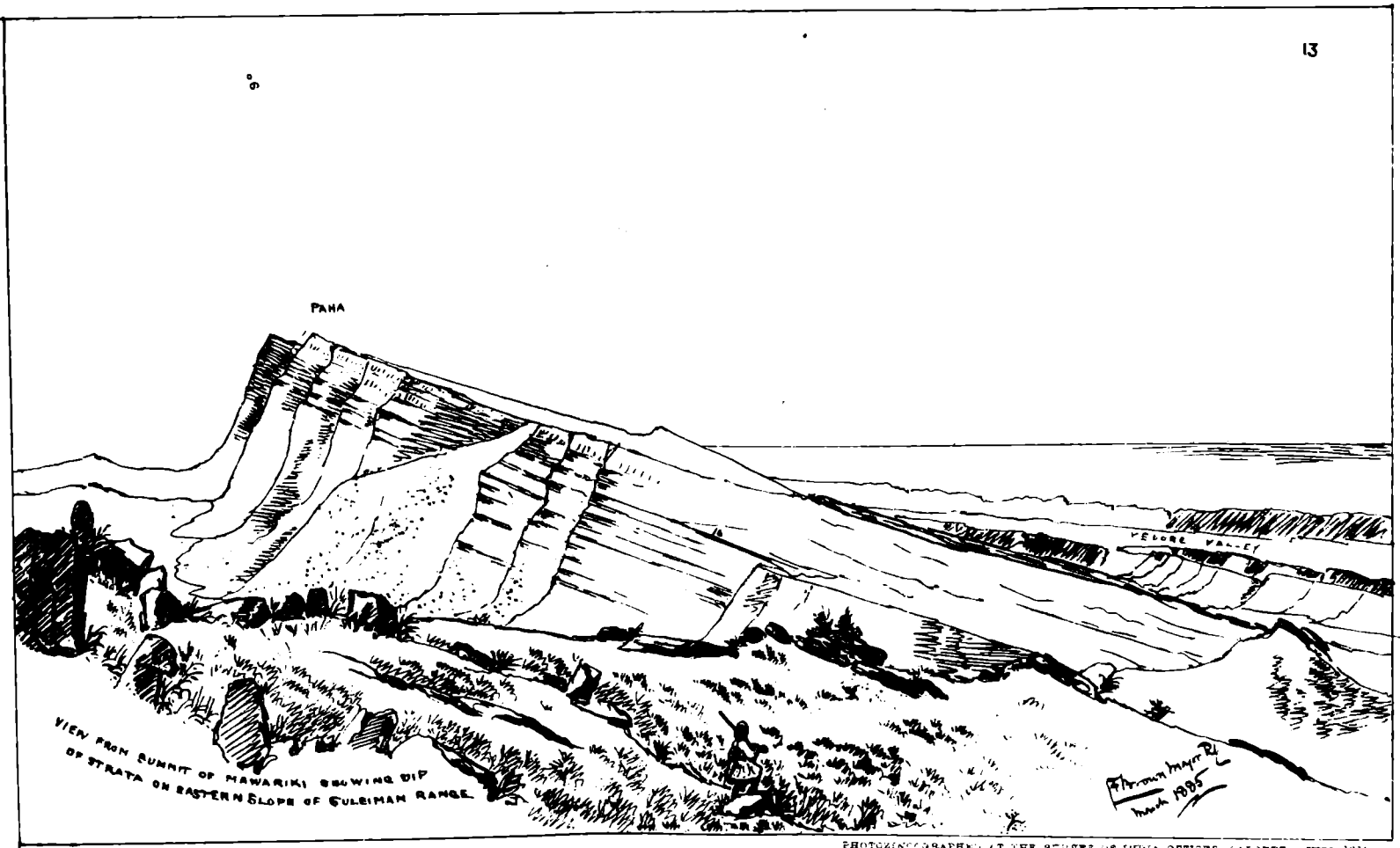
9°

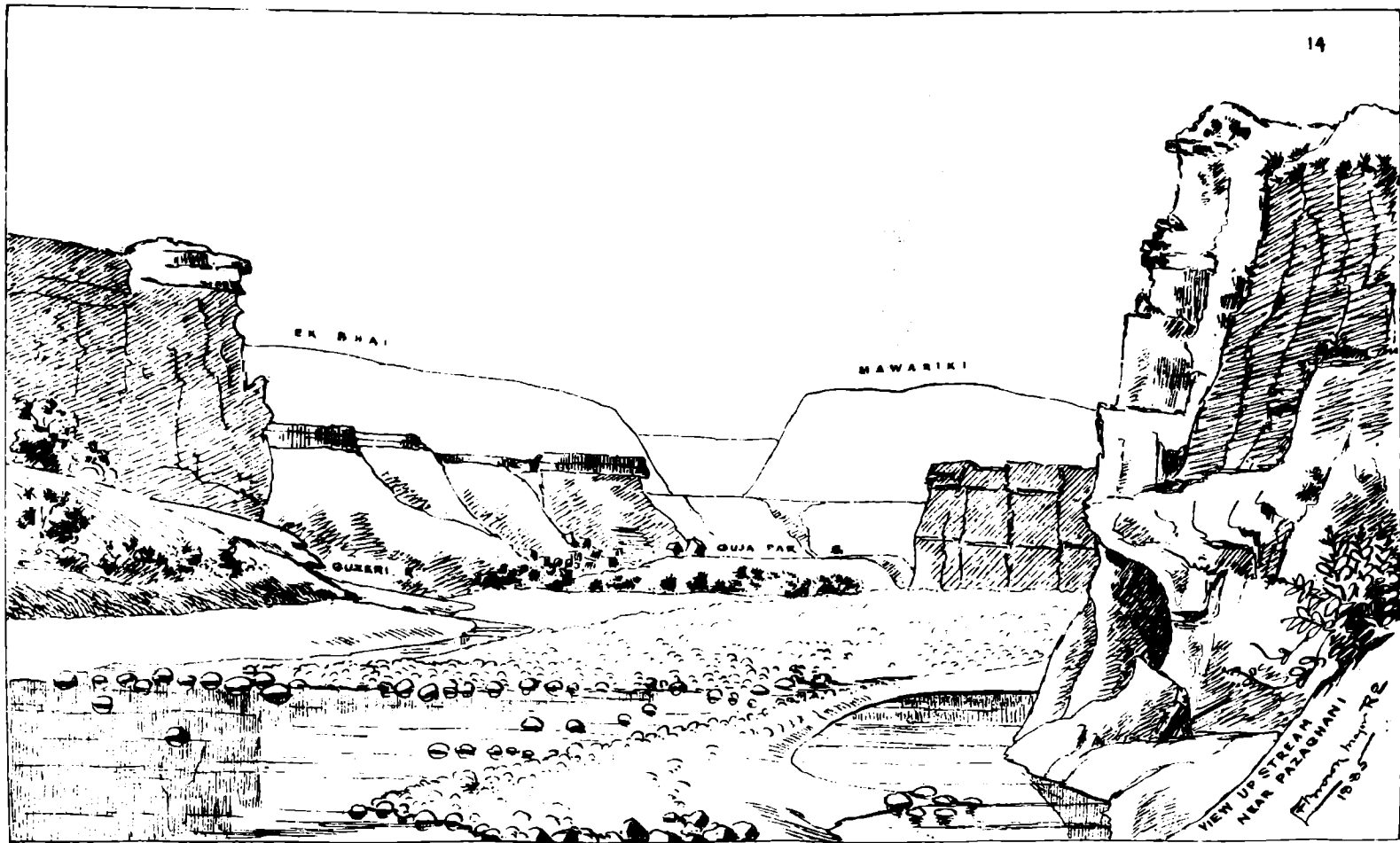
PAHA

VEDORE VALLEY

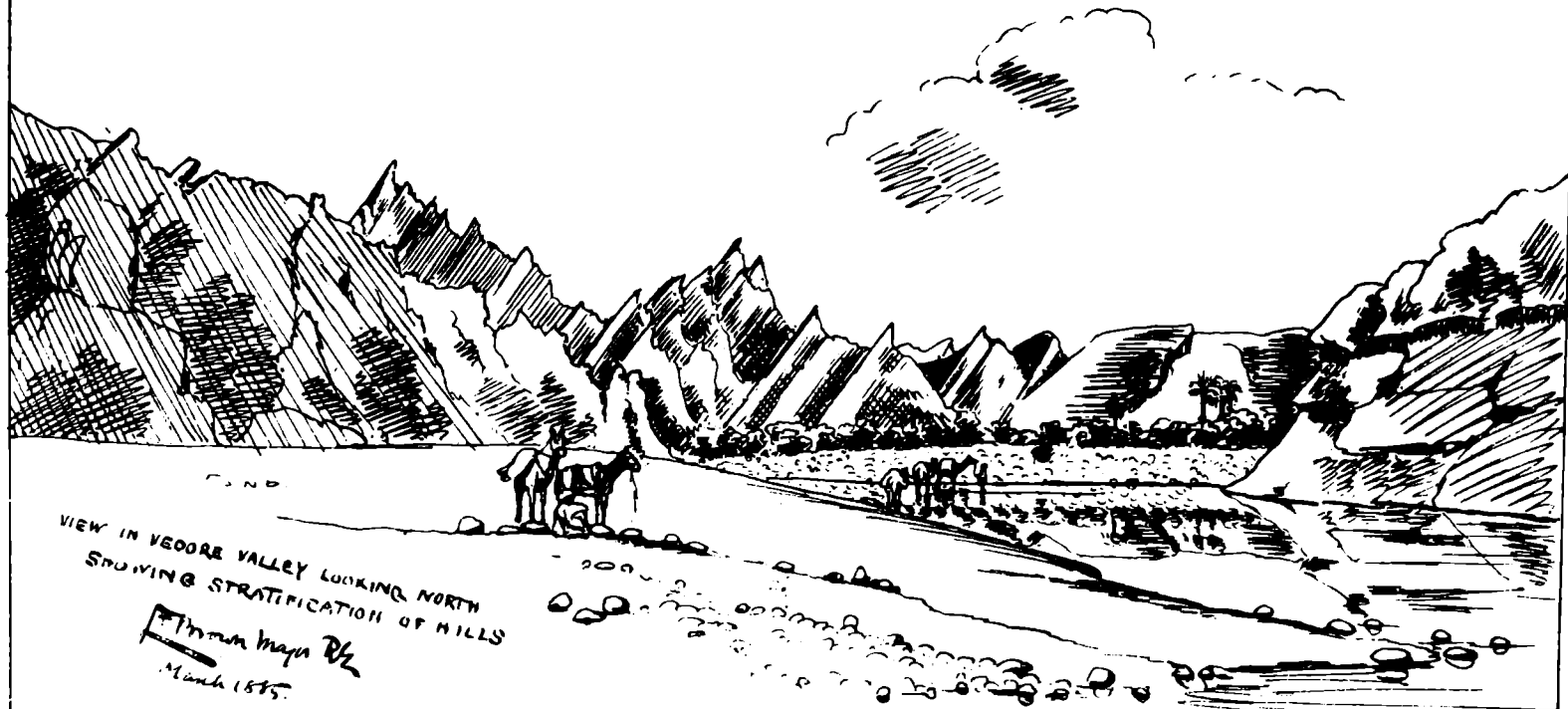
VIEW FROM SUMMIT OF MAWARIKI SHOWING DIP  
OF STRATA ON EASTERN SLOPE OF GULEIMAN RANGE.

Photographed by  
March 1895





PHOTOZINOGRAPHED AT THE SURVEY OF INDIA OFFICES, CALCUTTA, JULY 1885.

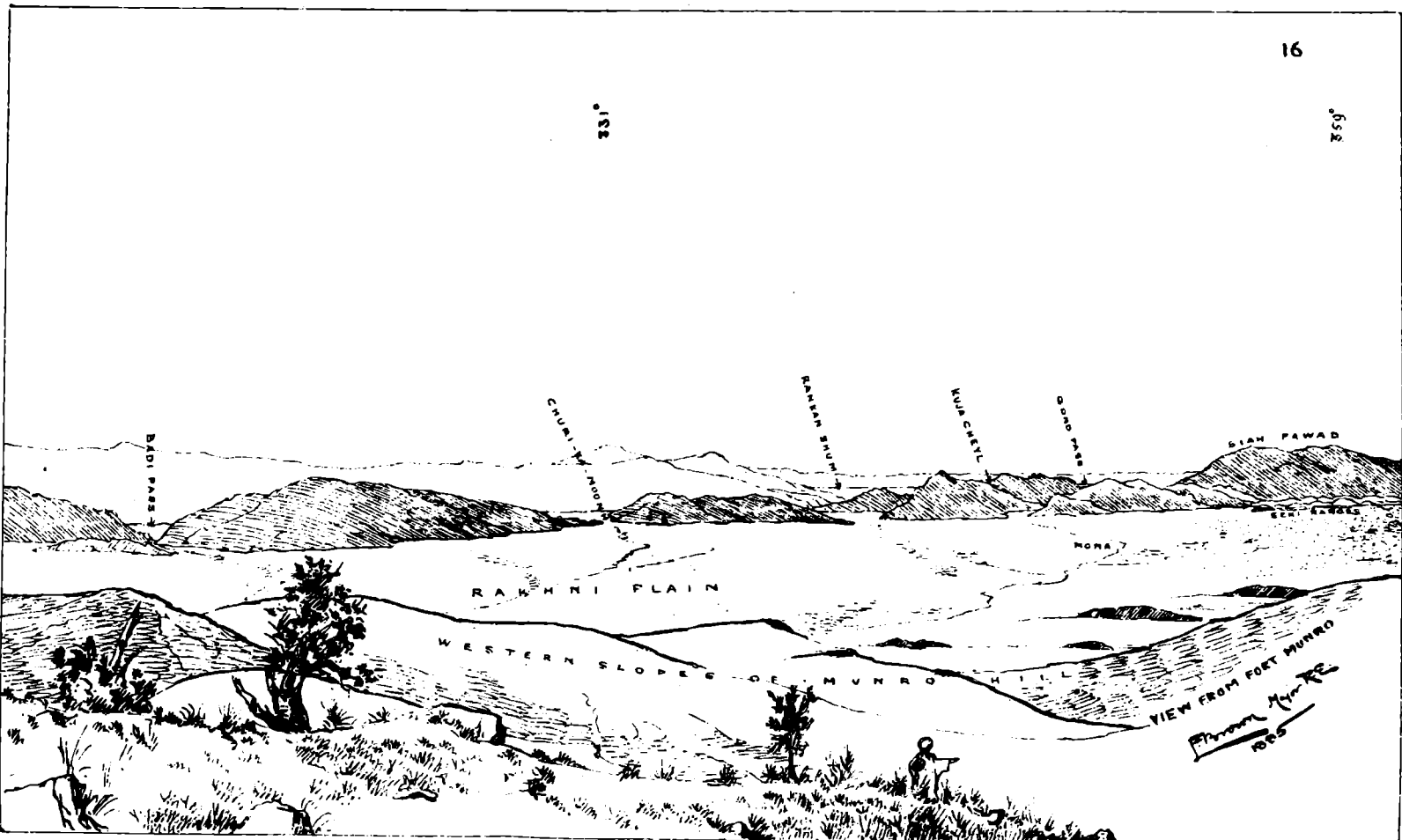


VIEW IN VEORE VALLEY LOOKING NORTH  
 SHOWING STRATIFICATION OF HILLS

*Thomson Major R/L*  
*March 1875.*

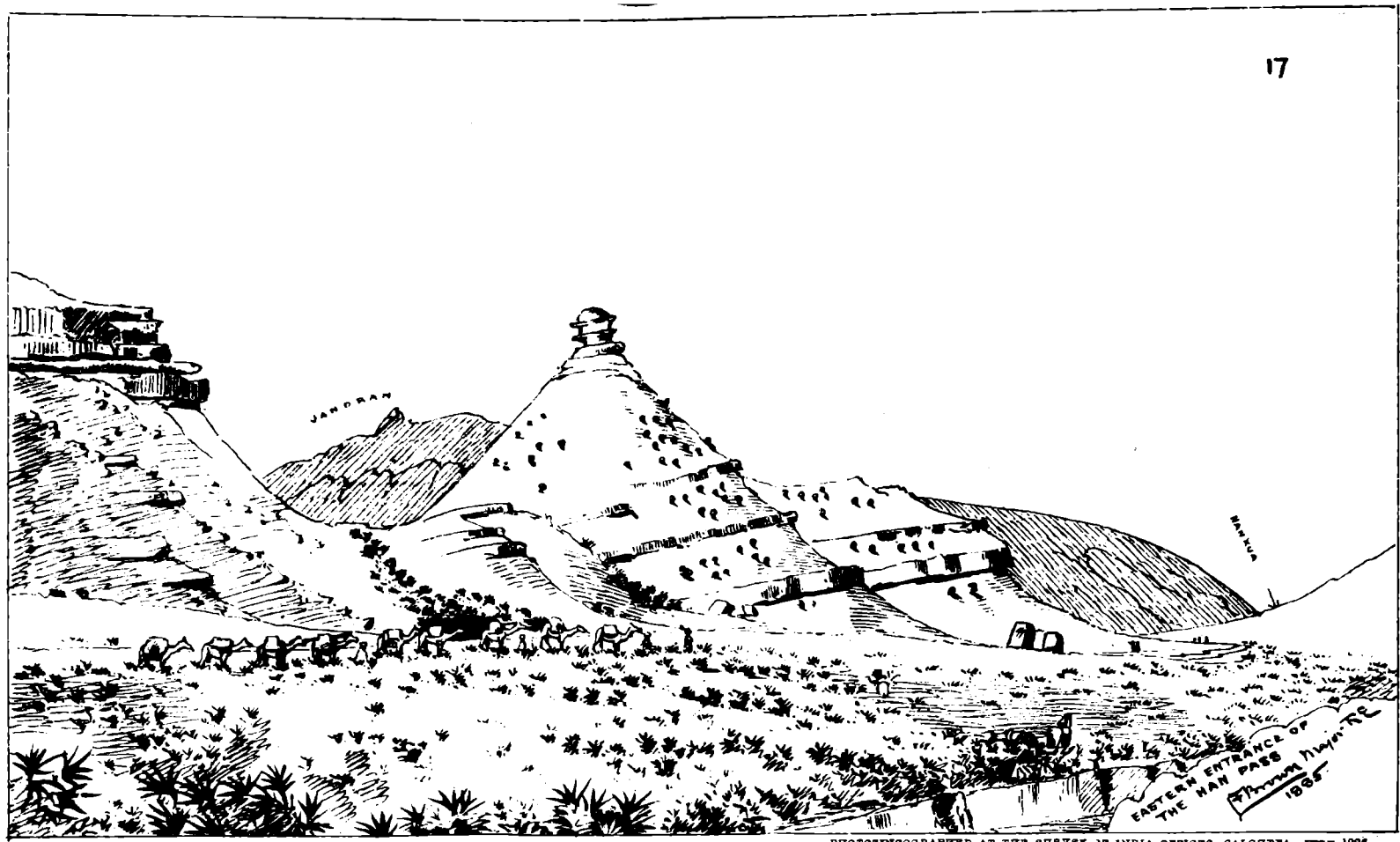
1331°

1329°



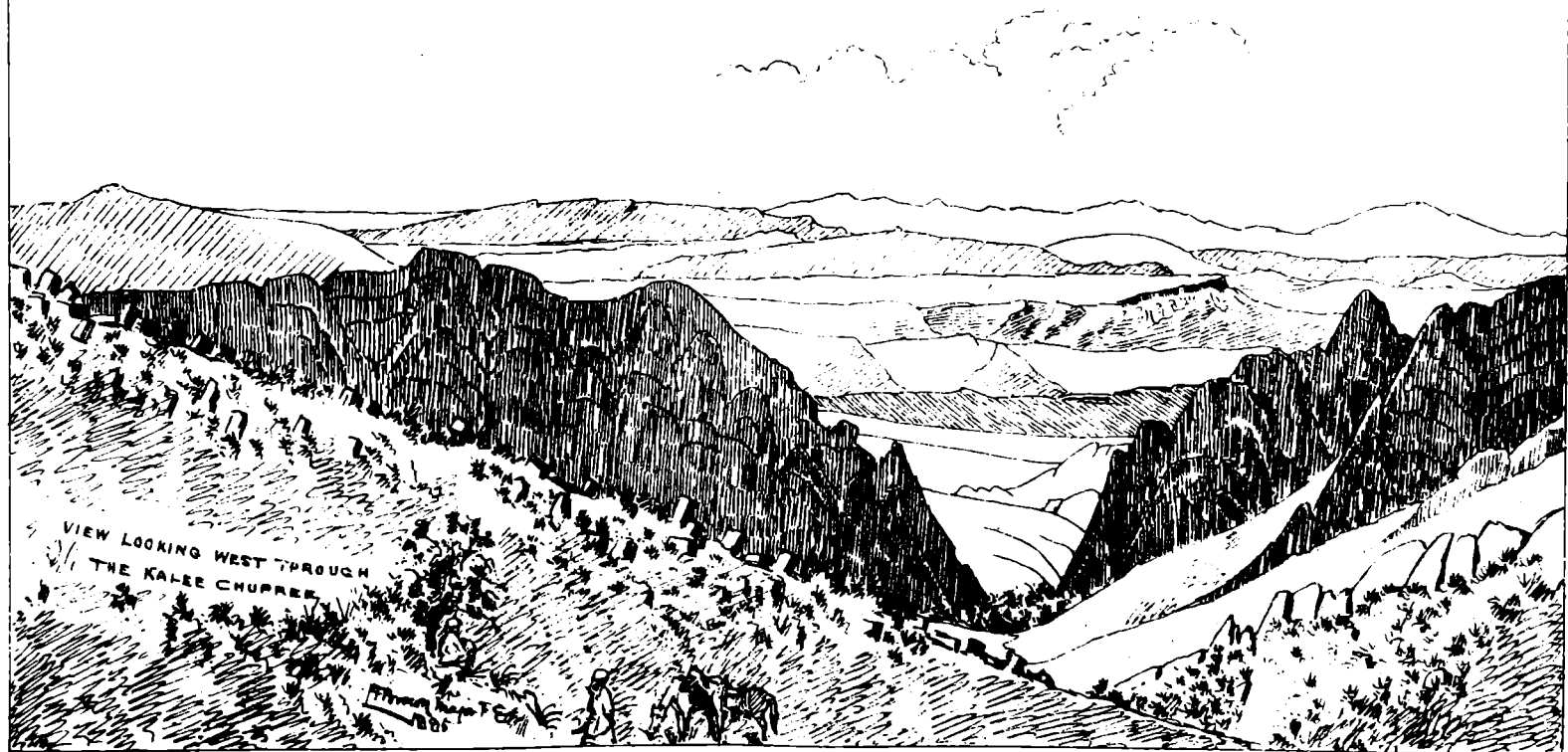
VIEW FROM FORT MUNRO  
*Phnom Munro*  
 1825

PHOTOENCOGRAVED AT THE SURVEY OF INDIA OFFICE, CALCUTTA, JULY 1888.

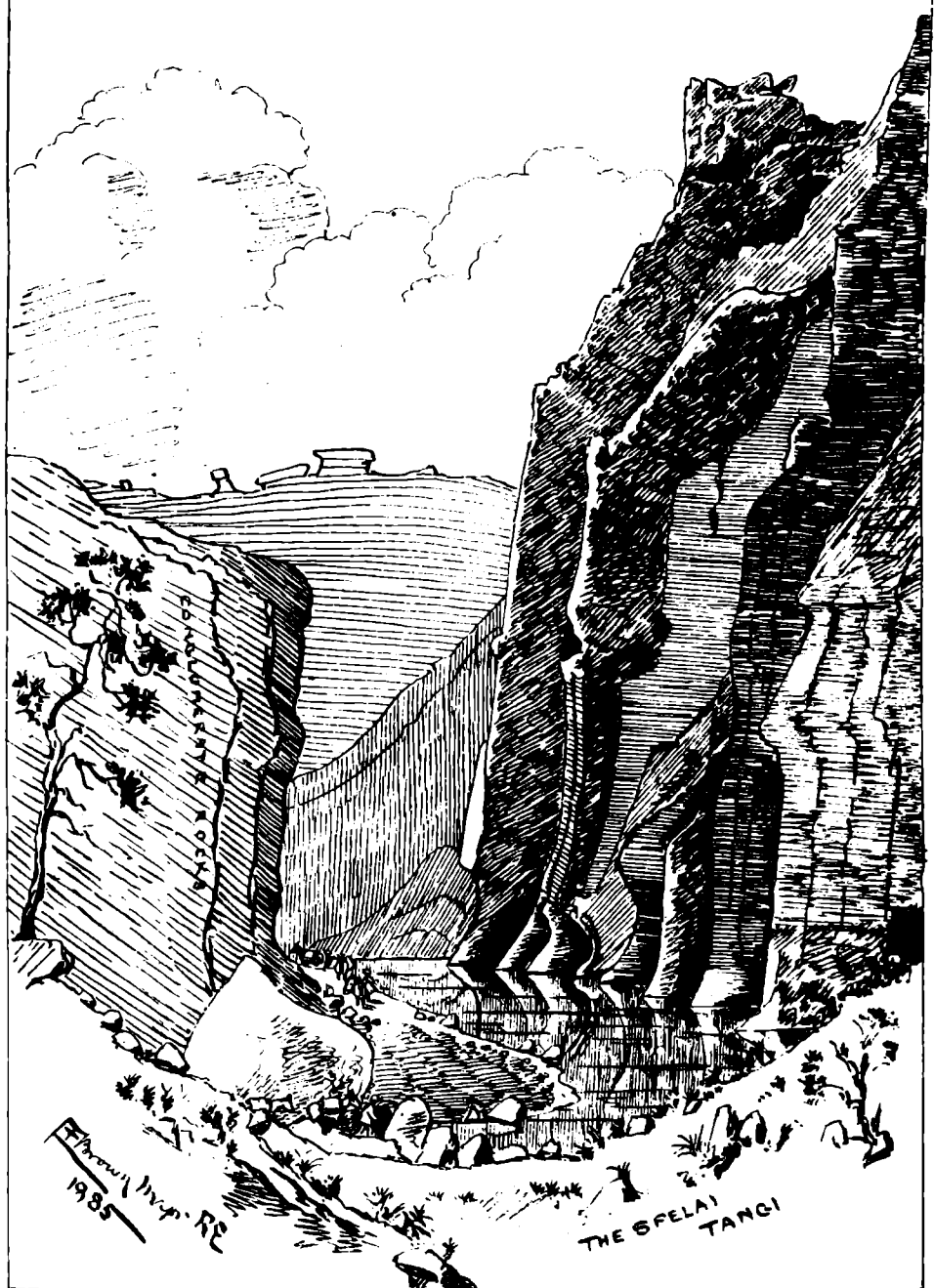


PHOTOZINOGRAPHED AT THE SURVEY OF INDIA OFFICES, CALCUTTA, JULY 1886





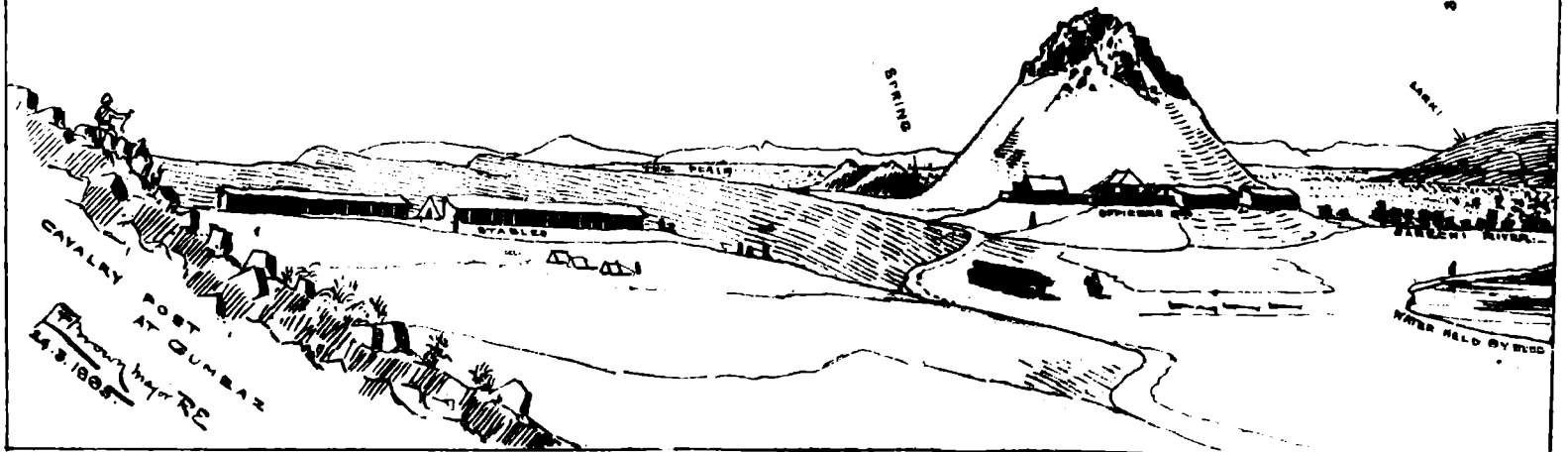
VIEW LOOKING WEST THROUGH  
THE KALEE CHURREE.



F. H. W.  
1985

THE SPELAI  
TANGI

PHOTOHINOGRAPHED AT THE SURVEY OF INDIA OFFICES, CALCUTTA, JULY 1893.



PHOTOGRAPHED AT THE SURVEY OF INDIA OFFICES, CALCUTTA, JULY 1865

958

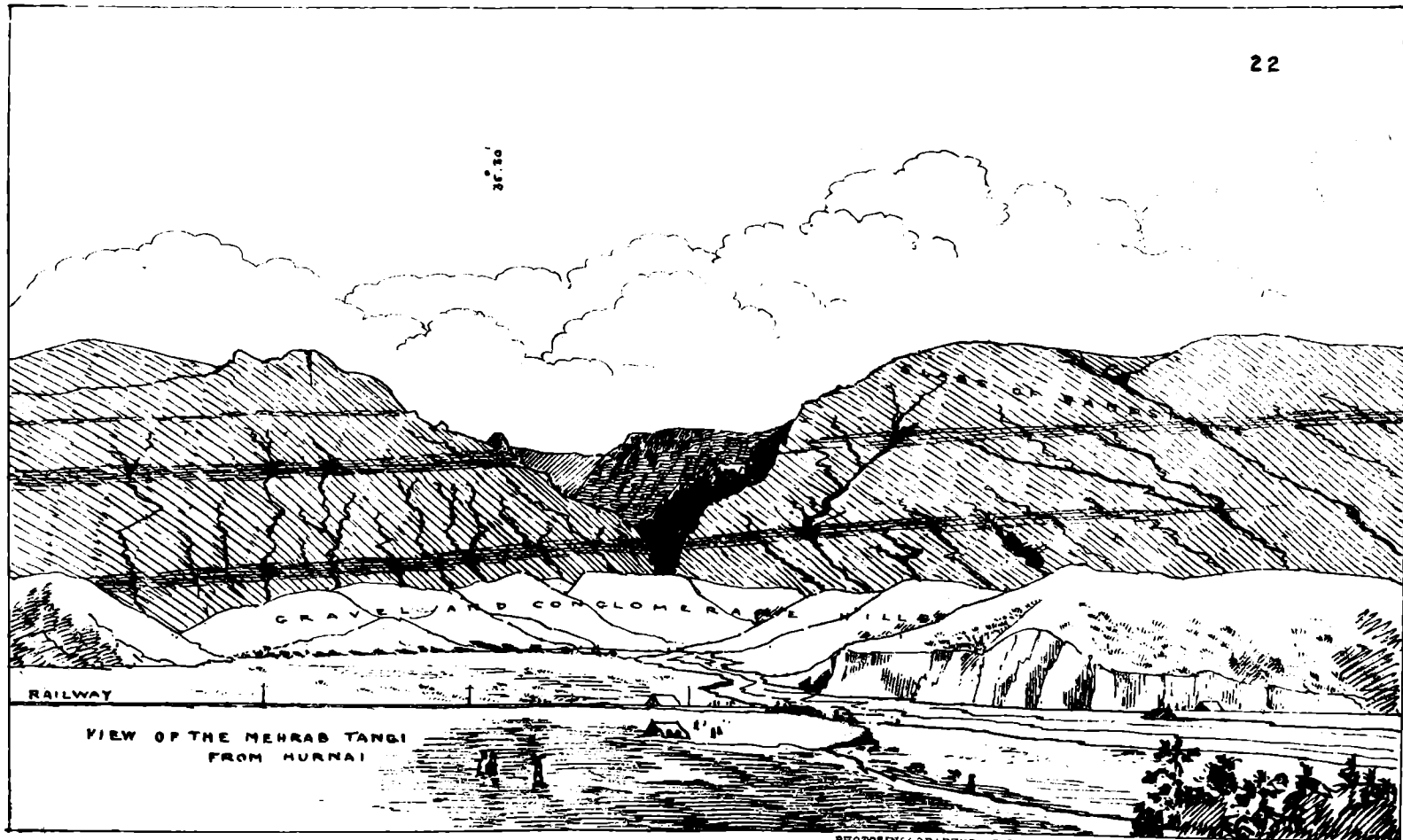


HILLS are dotted  
with wild  
olive trees

VIEW OF VARIK PASS  
FROM NEAR VARIK CAMP.

*W. H. Murray*  
April 1886

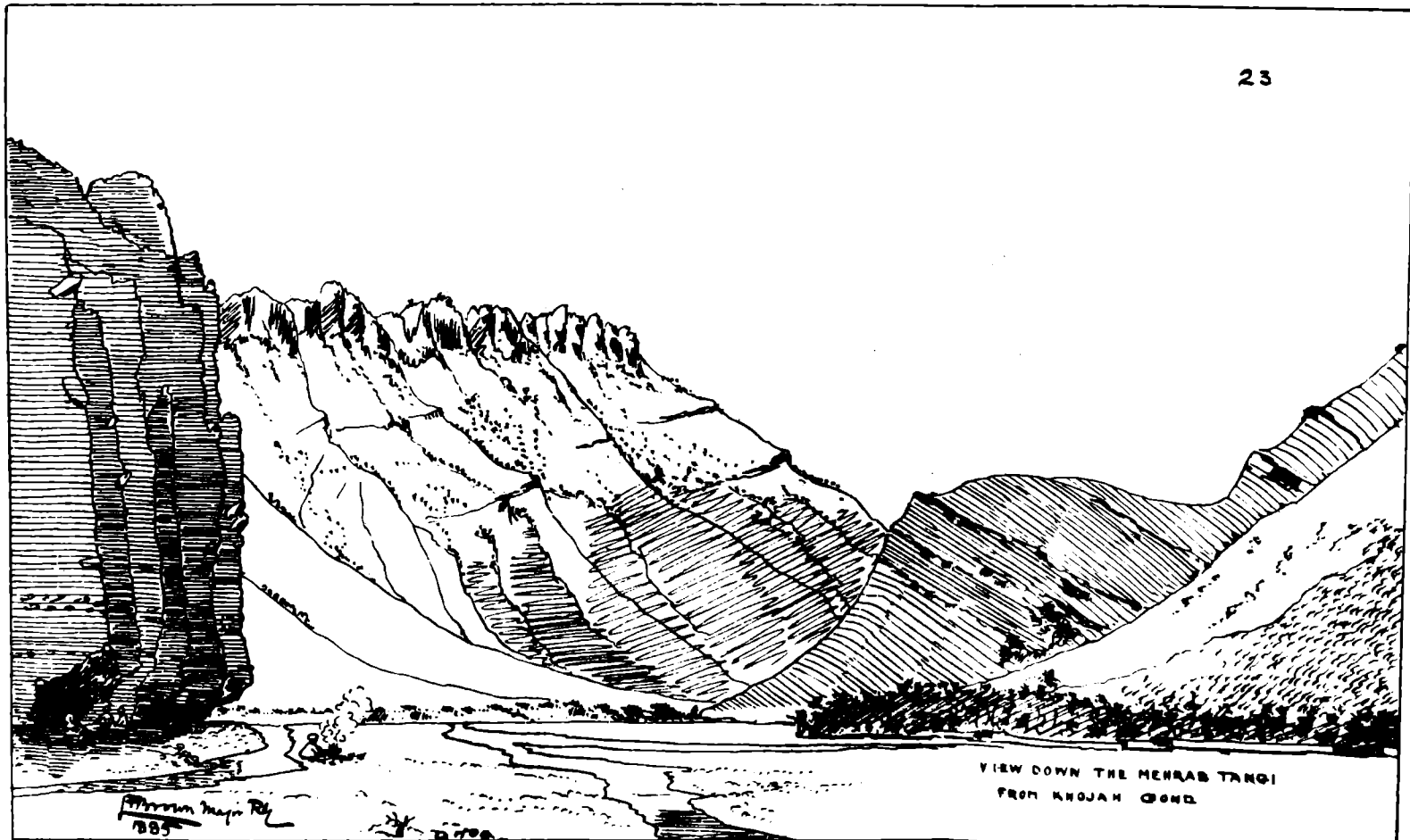
38. 30'



GRAVEL AND CONGLOMERATE HILLS

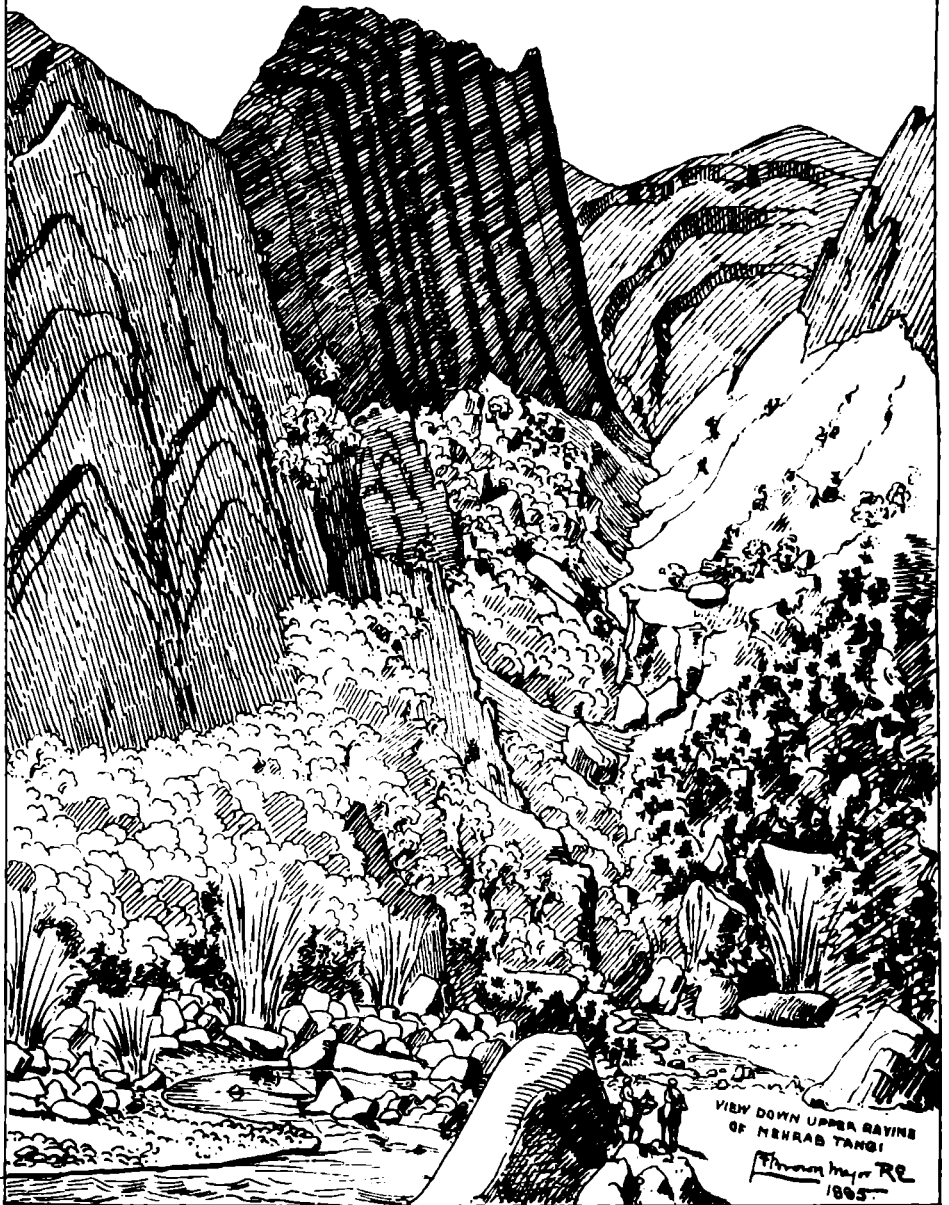
RAILWAY

VIEW OF THE MEHRAB TANGI  
FROM HURNAI



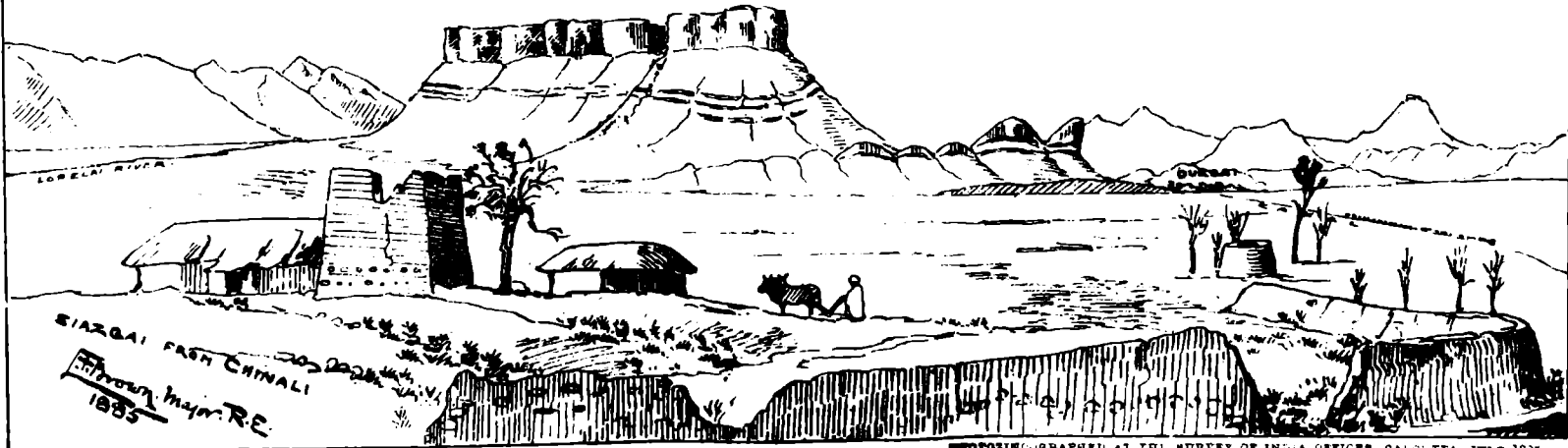
Photograph by R. S. S. 1885

VIEW DOWN THE MENRAB TANGI  
FROM KHOJAN GOND.



PHOTOMICROGRAPHED AT THE SURVEY OF INDIA OFFICES, CALCUTTA, JULY 1895

270°



SARGAL PASH CHINALI  
1885



18° 30'

YOG WAS H. KHANISDA.



IRON VALLEY

DURGAI

ROAD

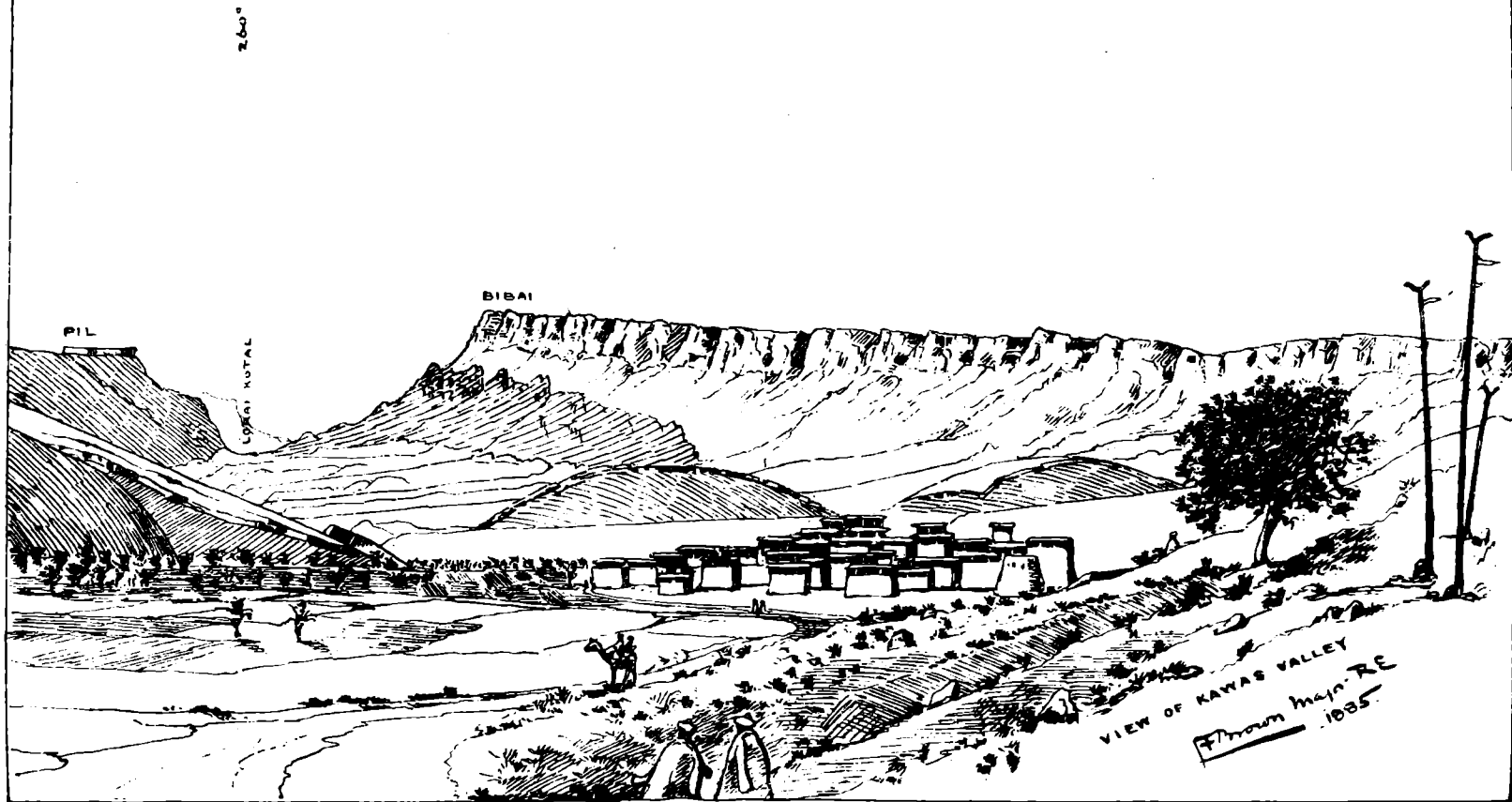
VIEW FROM SIAZGAI  
 F. Brown Major R.E.  
 1885.



DIRECTION OF KOTAL

F. P. ... RE  
April 1885

VIEW NEAR THE SUMMIT OF THE  
CHARI MOMANZAI  
IN JUNIPER FOREST



233

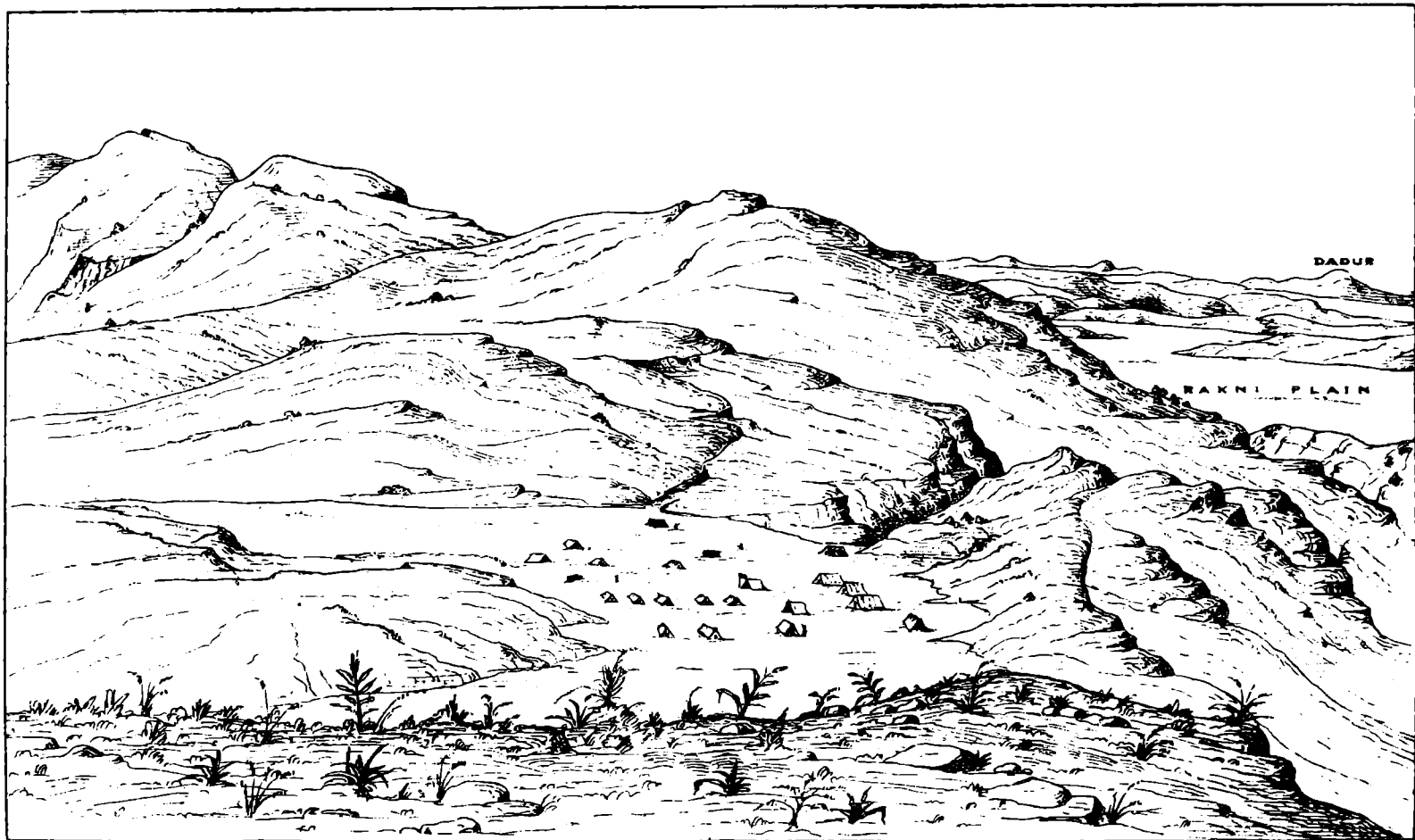


VIEW UP THE  
 ZIARUT VALLEY  
 FROM CHITON  
 A. P. ...  
 1885



*Rankan Plain from the Kujachel Pass*

PHOTOZINOGRAPHED AT THE SURVEY OF INDIA OFFICE, CALCUTTA, AUGUST 1896.



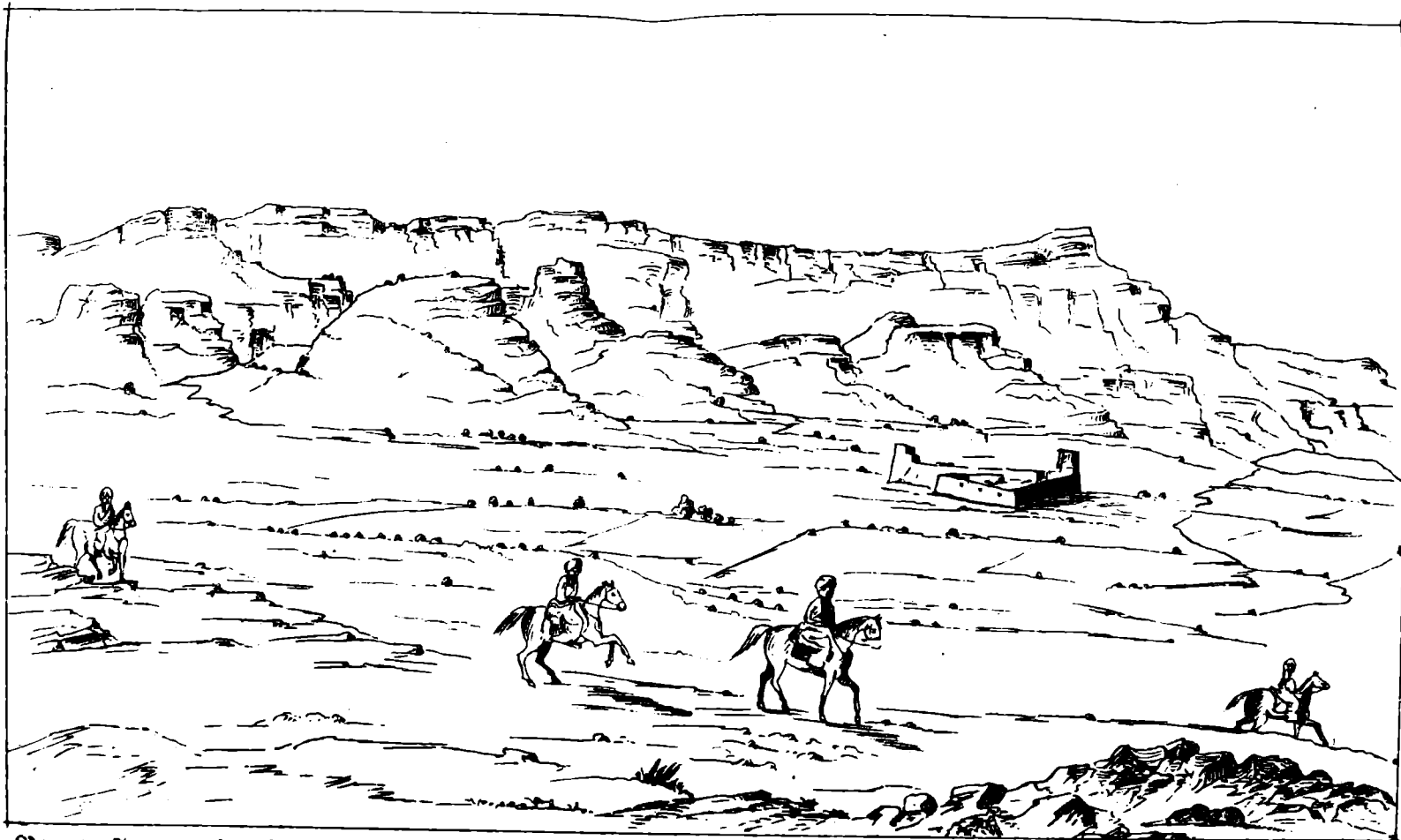
PHOTOZINOGRAPHED AT THE SURVEY OF INDIA OFFICES, CALCUTTA, AUGUST 1885.

*Rason ka Thal.*



PHOTOENGRAVED AT THE SURVEY OF INDIA OFFICE, CALCUTTA, AUGUST 1908.

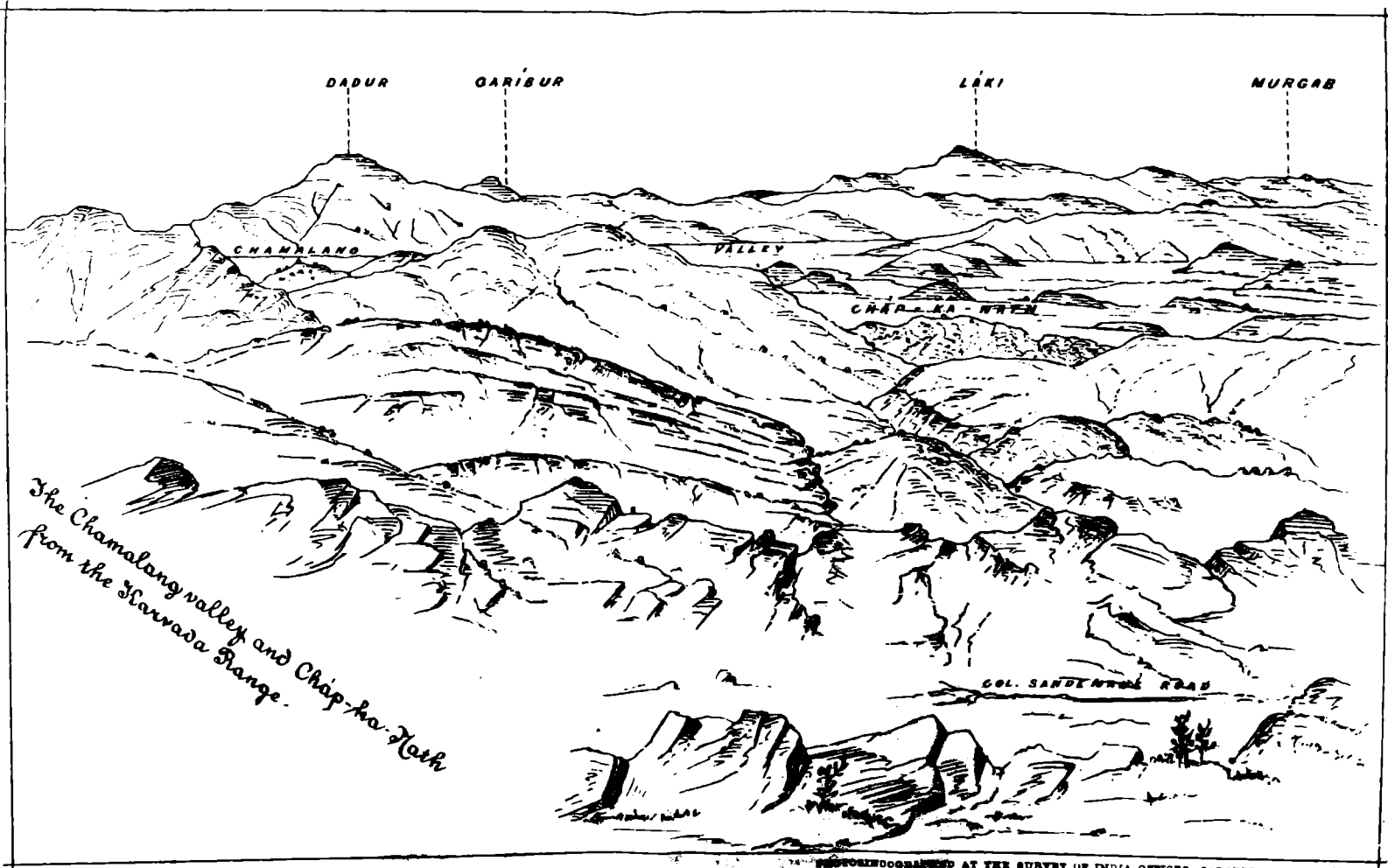
View facing west from above Hawaii



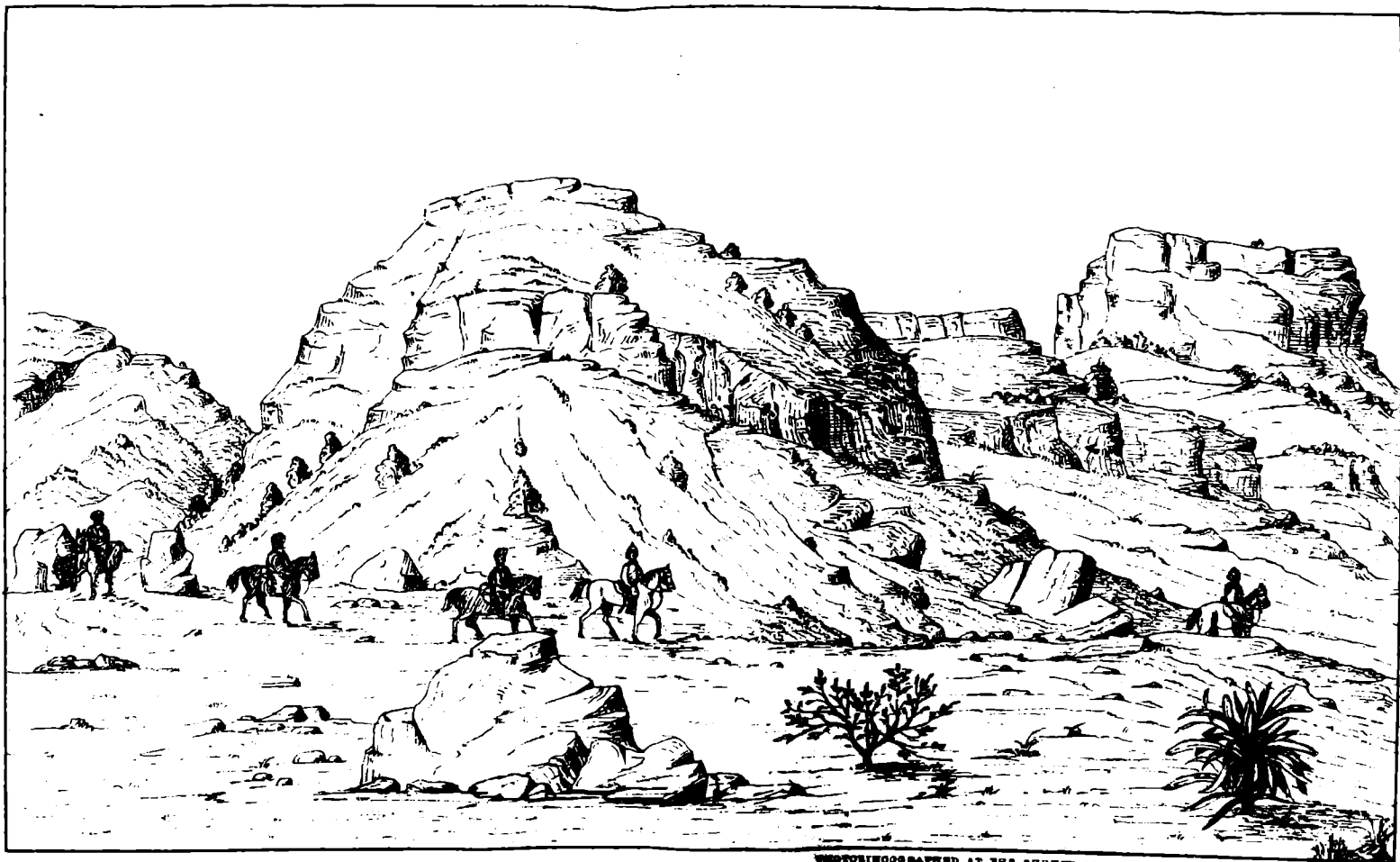
*View in Jagayagh valley Jakhrao*

PHOTOSINODGRAPHED AT THE SURVEY OF INDIA OFFICES, CALCUTTA, AUGUST 1888.



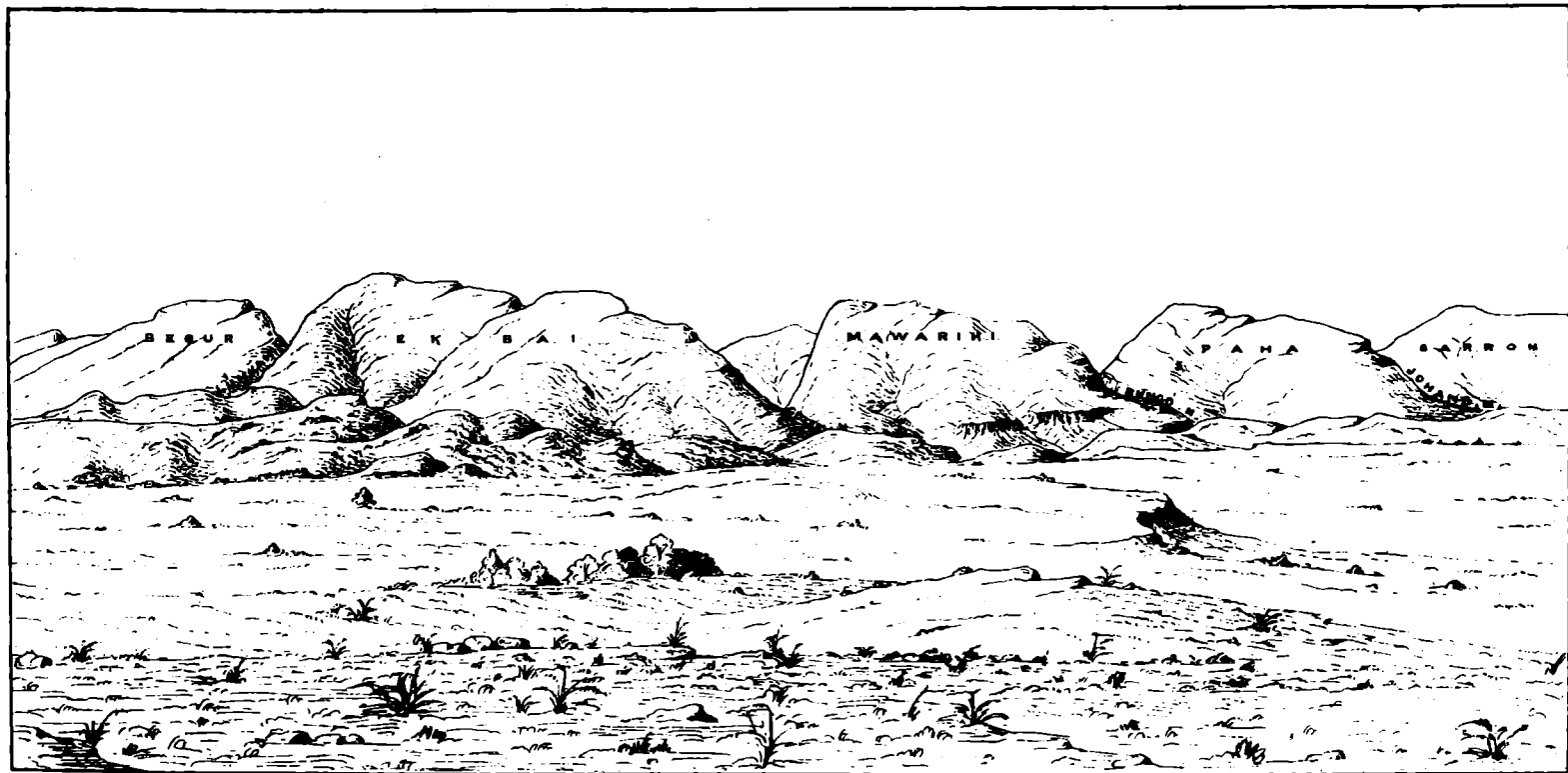


*The Chamlang valley and Chap-ka-Nhen  
from the Sarwada Range.*



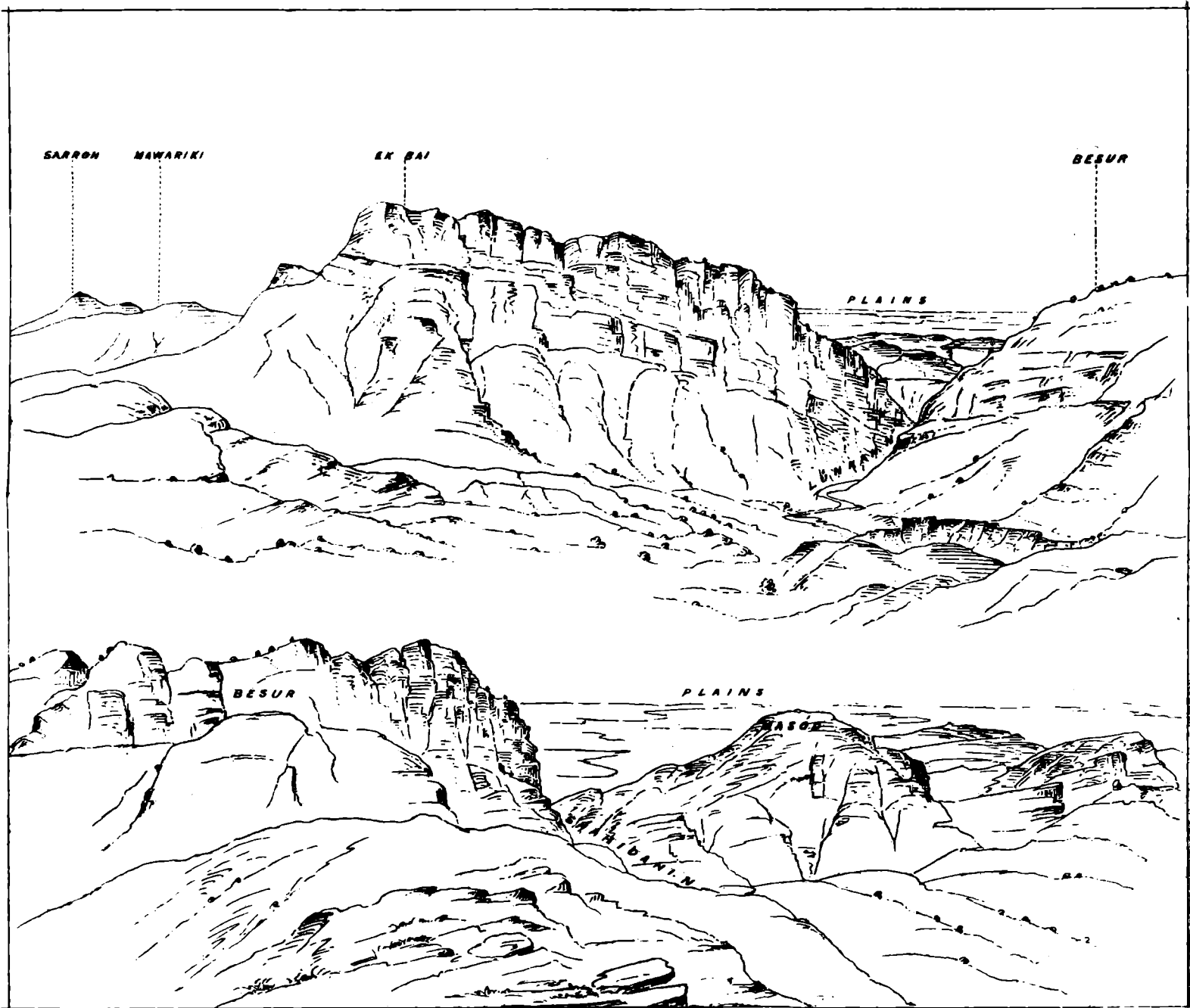
PHOTODUPLICATION AT THE SURVEY OF INDIA OFFICES, CALCUTTA, AUGUST 1985

View at Eastern entrance of Wanga Pass, into Jagayagh.



PHOTOENHOGRAPHED AT THE SURVEY OF INDIA OFFICE, CALCUTTA, AUGUST 1886.

*Eastern face of the Sulimian from above Pazaqani*



*Continued below*

*The western face of the Sulimans from Basar-ka-Ihal*

PHOTOENGRAVED AT THE SURVEY OF INDIA OFFICES, CALCUTTA, AUGUST 1885.